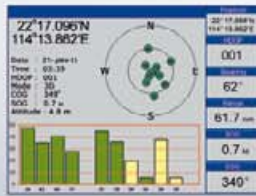
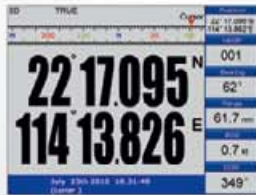
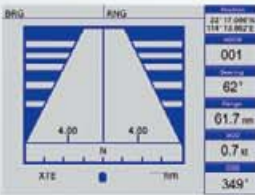
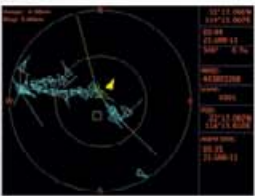
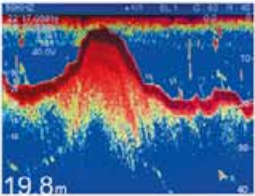
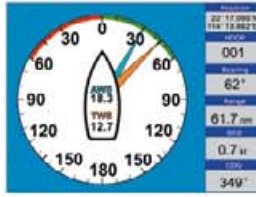


ONWA[®]

GPS CHARTPLOTTER FISH FINDER

MODEL KCOMBO-7



- Easy to use menu operation
- 7" high resolution LCD 640×480
- Sunlight Viewable
- C-Map NT Max™ included
- Internal GPS antenna
- Digital fishfinder technology
- 50/200 KHz transom mount triducer included
- Speed, depth, water temperature and position
- Ingress Protected to Ipx7*
- 2 year Warranty

KCOMBO-7

SPECIFICATION

PLOTTER CHARACTERISTICS

Waypoints/icons	14,000 waypoints with name, symbol, 10 proximity waypoint
Routes	waypoint up to 169 points each, plus MOB and Track Navigation or Goto Track modes
Tracks	21,000 point automatic track log: 1 saved track (up to 2100 track points each)let you retrace your path in both directions
Alarms	XTE, Anchor drag, arrival, speed, voltage, proximity waypoint and time,AIS alarm.
Palette	Normal Daylight exposed to sunlight Night in dark environment NOAA paperchart colors
Tides	Tide data
Projection	Mercator projection
Position format	Lat/Lon
Basemap	Built-in Onwa K-Chart
External Map	SD Cards slot for C-Map MAX
User data storage	Internal backup of user settings, or external SD-card
Plot Interval	1s to 99h or 0.01 nm to 9.99nm
Plotting scales	0,01nm to 1,000nm
Nav Data	Inputs: \$--DBT, \$--DPT, \$--GGA, \$--GLL,\$--GSA, \$--GSV, \$--HDG,\$--HDM,\$--HDT,\$--MTW, \$--RMB,\$--RMC, \$--VTG, \$--ZDA, \$--VWR,\$--VVT,\$--MWD, \$--VPW Outputs: \$--AAM, \$--APB, \$--BOD,\$--BWC,\$--GGA, \$--GLL, \$--RMB,\$--RMC,\$--VTG, \$--XTE, \$--ZDA, \$--DBT, \$--DPT,\$--WPL,\$--ZDL, \$--ZTG Outputs for autopilot: \$--AAM, \$--APB, \$--BOD,\$--VTG,\$--DBT,\$--DPT
Perspective View	On/off
Celestial	Sunrise/Sunset Moonrise/Moonset

Power Supply 10.5 to 35VDC, current drain<1.0A at 12V

Physical

Size:	243mm(H)X155mm(W)X82mm(D)
Weight:	0.6kg
Display:	7-inches ColorTFT day-view LCD 800 X 600 pixels
Waterproofing:	Display unit: IPX5 Antenna unit: IPX6
Temperature range:	Display unit: -15°C to +55°C Antenna unit: -25°C to +70°C

EQUIPMENT LIST

Standard	
1. Display unit	
2. Antenna unit with 10m cable	
3. Transducer (Optional)	
4. Operator manual	
5. Installation materials and standard spare parts	

GPS RECEIVER CHARACTERISTICS

Receiver	50 parallel channel GPS receiver continuously Tracks and uses up to 50 satellites to compute and update your position
Acquisition times	Cold start: 27 seconds average Warm start: 27 seconds average Hot start: 1 seconds average
Update rate	1/second,continuous
Accuracy	Position: <2.5 meters(95%) without S/A Velocity: 0.1 Meter/sec without S/A Time: ±100ns synchronized to GPS time
Dynamics	Altitude: 50,000m Max Velocity: 500 m/s Acceleration: 4g Max
Datum	WGS 84 & Others
Interfaces	NMEA 0183 input, RS232 output
Antenna	KA07

AIS interface

Data input:	NMEA 0183, RS232
Baud rate:	38,400

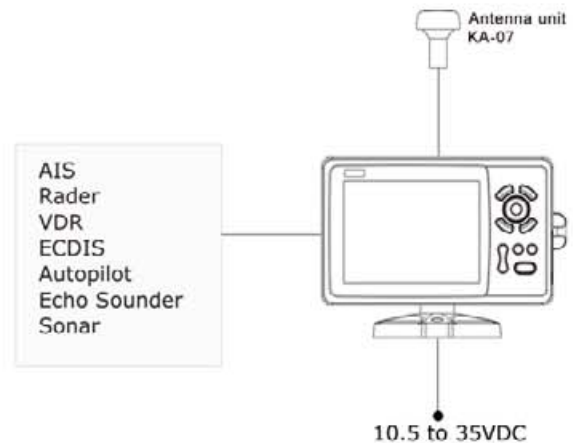
ECHO SOUNDER

Echo Color	8 colors (including background color) according to echo intensity. The background color is selectable from blue, light blue, white and black.
Basic Range	Meters 10/20/40/80/150/300/500/1000 Feet 30/60/120/250/500/1000/1600/3000 Fathoms 5/10/20/40/80/160/250/500 Passi/Braza 6/12/20/50/100/200/300/600 The basic ranges can be changed on the system menu.
Range Shift	Up to 1000 meters (3000 feet, 500fathoms,600 passi/braza)
Zoom Range	Times 2,3,4 and 5 ranges
Bottom Lock Expansion	5/10meters,10/20feet, 2/5fathoms, 2/5passi/braza
Auto Mode	Automatic adjustment of range and gain
Display Mode	High Frequency (200K),Low Frequency (50K), Dual (200K and 50K 1/2display on each), Zoom (200K and 50K zoom) and A-scope Display
Zoom Display	Marker Zoom, Bottom Zoom and Bottom-lock Expansion
Display Advance Speed	Lines/TX:Freeze,1/8,1/4,1/2,1/1,2/1
TX Frequency	50 and 200kHz (alternately transmitted)
Power Output	600W
Pulse-length/TX rate	

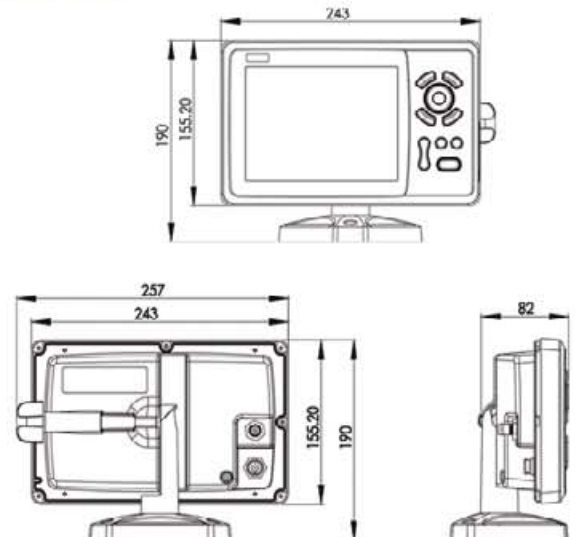
Display End Depth (m)	5	10	20	40	80	150	200	300	600	1000
Pulse-Length (ms)	0.15	0.15	0.15	0.25	0.4	0.7	1.5	1.5	2.7	3.6
TX Rate (Pulse/min)	750	750	750	375	187	107	50	50	30	21

Interference Rejecter	Rejects unwanted signals by comparing last and present echoes in strength.
Alarm	Fish and Bottom alarms, Temperature alarm (sensor required)

INTERCONNECTION DIAGRAM



DISPLAY UNIT



Agenzia
ufficiale per
l'Italia :

Apelmar
Technology S.p.A.

Telefono 010 870058 r.a.
Telefax 010 870248
e-mail: apelmar@koden.it
http://www.koden.it