

NEW

KODEN

Digital Searchlight Sonar

((DIGITAL))

KDS-5500BB

High sensitivity over long range!

80/140/180 kHz

Selectable Frequency at time of purchase

17 inch LCD monitor (optional)

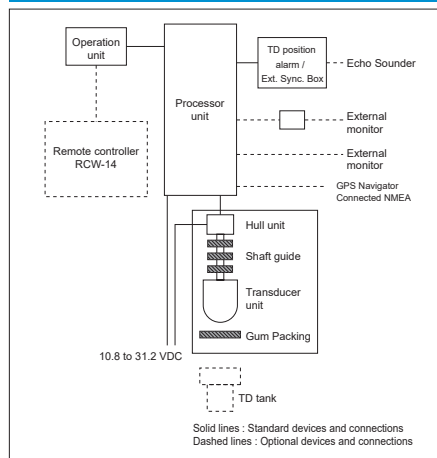


Black box type

SPECIFICATIONS

| | |
|----------------------------------|---|
| Model | KDS-5500BB |
| Output power (RMS) | 1.5 kW |
| Output frequency | 80 kHz, 140 kHz, 180kHz (Select at time of purchase) |
| Tilt angle | 5° to 90° (1° step) |
| Beam angle | 80 kHz: 10° / 140 kHz: 12° / 180 kHz: 10° |
| TD stroke | 150 to 380 mm (Recommended value 150 mm) |
| Display size and type | Any monitor with VGA resolution (Owner supplied) |
| Basic ranges | 10 to 1000 (m), 10 to 700 (f.m), 30 to 3000 (ft), 10 to 600 (fm) (8 ranges can be set to users choice) |
| Range units | m, fm, ft, Tfm |
| Scanning | Sonar mode |
| sector angles | 5° step: 5°, 25°, 45°, 65°, 125°, 165°, 205°, 360° 10° step: 10°, 30°, 50°, 90°, 130°, 170°, 210°, 360° 15° step: 15°, 45°, 75°, 105°, 135°, 165°, 225°, 360° 20° step: 20°, 60°, 100°, 140°, 180°, 220°, 260°, 360° |
| Bottom scan mode | 3° step: 3°, 27°, 45°, 63°, 93°, 117°, 147°, 177° 5° step: 5°, 25°, 45°, 65°, 95°, 115°, 145°, 175° |
| 360° Scanning | Scanning range: 20 40 60 80 100 120 160 180 200 240 400 5° step: 6.3 8 10 11.8 14 15.8 19.5 21.6 23.5 27.5 43.3 10° step: 3.7 4.7 5.6 6.5 7.6 8.6 10.6 11.5 12.5 14.4 22.4 15° step: 3.3 3.7 4.3 4.9 5.7 6.4 7.9 8.2 8.9 10.3 15.7 20° step: 3.3 3.4 3.8 4.2 4.8 5.2 6.4 6.6 7.3 8.1 12.2 |
| Bearing center | 1° step |
| Presentation modes | Sonar, Off-center, Bottom scan, Echo sounder, 2 Mode Display, One line |
| Off-Center | Fore, Back, Left, Right |
| Target lock | Reverse, Horizontal, Horizontal + Vertical, Marker + Horizontal, Marker + Horizontal + Vertical |
| Presentation colors | 8 colors, 16 colors |
| Functions | TVG, Color rejection, Dynamic range, Compass display, Pulse width, Output power control, Noise reduction, A-scope, CM key, Frequency bandwidth, Image correction, Bearing display, TD auto up, Sona-Tone™ |
| Language | English, Japanese, Korean, Spanish, Thai, Traditional Chinese, Greek, Italian, Portuguese, Burmese |
| Input data format and sentences | NMEA0183 CGA, GLL, HDG, HDM, HDT, RMC, THS, VTG, ZDA |
| Output data format and sentences | NMEA0183 DBT, DPT, GGA, GLL, MTW, RMC, TLL, VTG, ZDA |
| NMEA ports | Total 1 : input / output |
| Power supply | Processor unit: 10.8 to 31.2 VDC Hull unit: 10.8 to 31.2 VDC |
| Power consumption | Processor unit: 70 W or less (24 VDC) Hull unit: 70 W or less (24 VDC) |
| Operating temperature | -15 °C to +55 °C |
| Water protection | - |

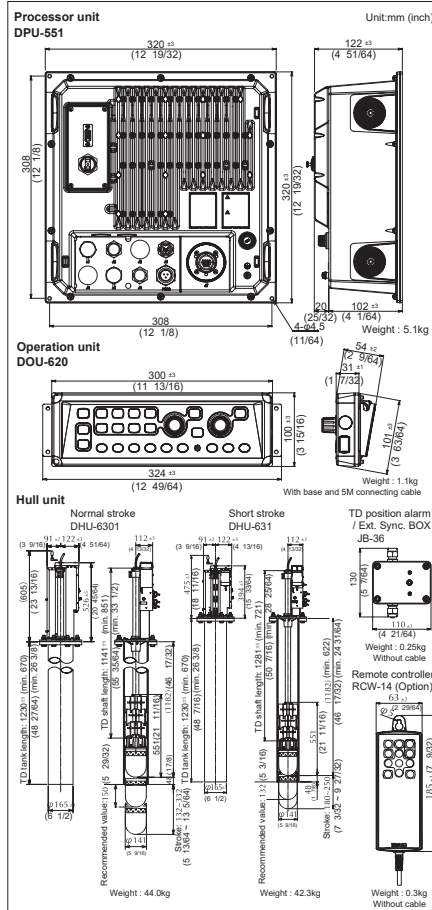
CONNECTIONS



EQUIPMENT LIST

| | | |
|--------------------|---|---|
| Standard equipment | Processor unit | 1 |
| | Operation unit | 1 |
| | Hull unit (Normal stroke / Short stroke) | 1 |
| | Accessories for Processor unit | 1 |
| | Installation materials for Hull unit | 1 |
| | TD position alarm / Ext. Sync. Box | 1 |
| | DC power cable | 1 |
| | Operation manual, Installation manual, Quick Reference | 1 |
| Options | Remote controller, PVC TD tank, FRP TD tank, Shaft guide for FRP tank | 1 |
| | AC rectifier unit, Connecting cable, 17 inch LCD monitor | 1 |

DIMENSIONS AND WEIGHT



* Design and specifications are subject to change without notice.

KODEN Koden Electronics Co., Ltd.

Tamagawa Office:
2-13-24 Tamagawa, Ota-ku, Tokyo, 146-0095 Japan
Tel: +81-3-3756-6501 Fax: +81-3-3756-6509
Uenohara Office:
5278 Uenohara, Uenohara-shi, Yamanashi, 409-0112 Japan
Tel: +81-554-20-5860 Fax: +81-554-20-5875

overseas@koden-electronics.co.jp
www.koden-electronics.co.jp

Safety precaution To ensure proper and safe use of the equipment, please carefully read and follow the instructions in the Operation Manual.

For details, please contact:

Agenzia ufficiale per l'Italia :

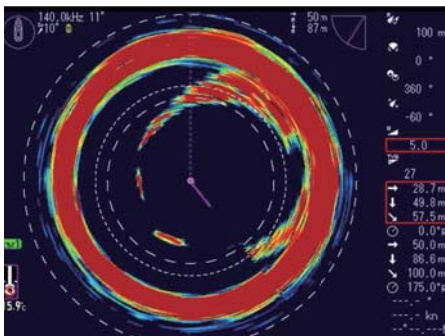


Telefono 010 870058 r.a.
Telefax 010 870248
apelmar@koden.it
www.koden.it

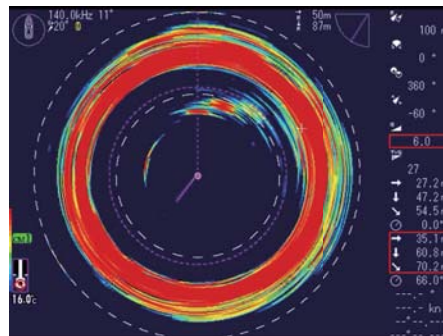
High Sensitivity fixed frequency model KDS-5500BB

Image comparison of KDS-5500BB and Broadband sonar

Shallow water (100m)

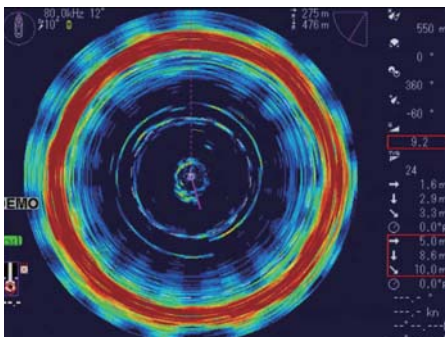


KDS-5500BB 140kHz

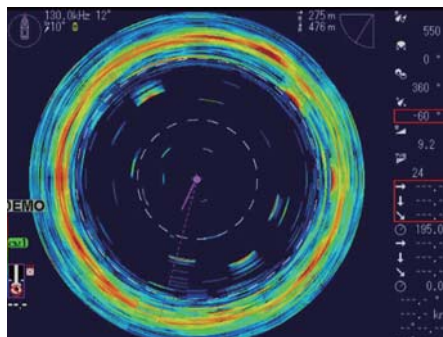


Broadband 140kHz

Deep water (550m)



KDS-5500BB 80kHz



Broadband 130kHz

Recommended sonar selection

What fits you better?

- ▼ Target specific fish species and use only one frequency:
KDS-5500BB
- ▼ Using sonar for different fishing, different areas, different seasons:
Broadband Sonar

Featured option

Reduce image distortion using motion sensor (AS model)

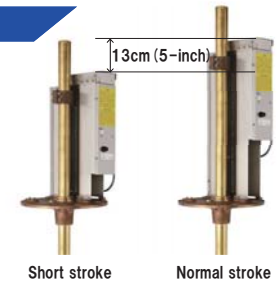


When stabilizer function is activated, it reduces image distortion caused by pitch and roll of the vessel in high seas.

Compact hull unit

Limited room for installation?

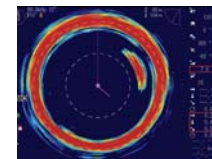
- ▼ Solved with a short hoist version, requires 13cm less room.



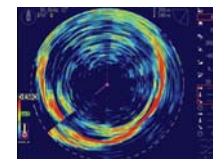
Short stroke

Normal stroke

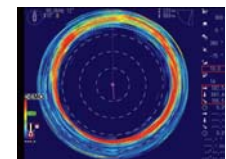
Screen image of KDS-5500BB/80 kHz



Sardine



Red snapper



Depth 680m